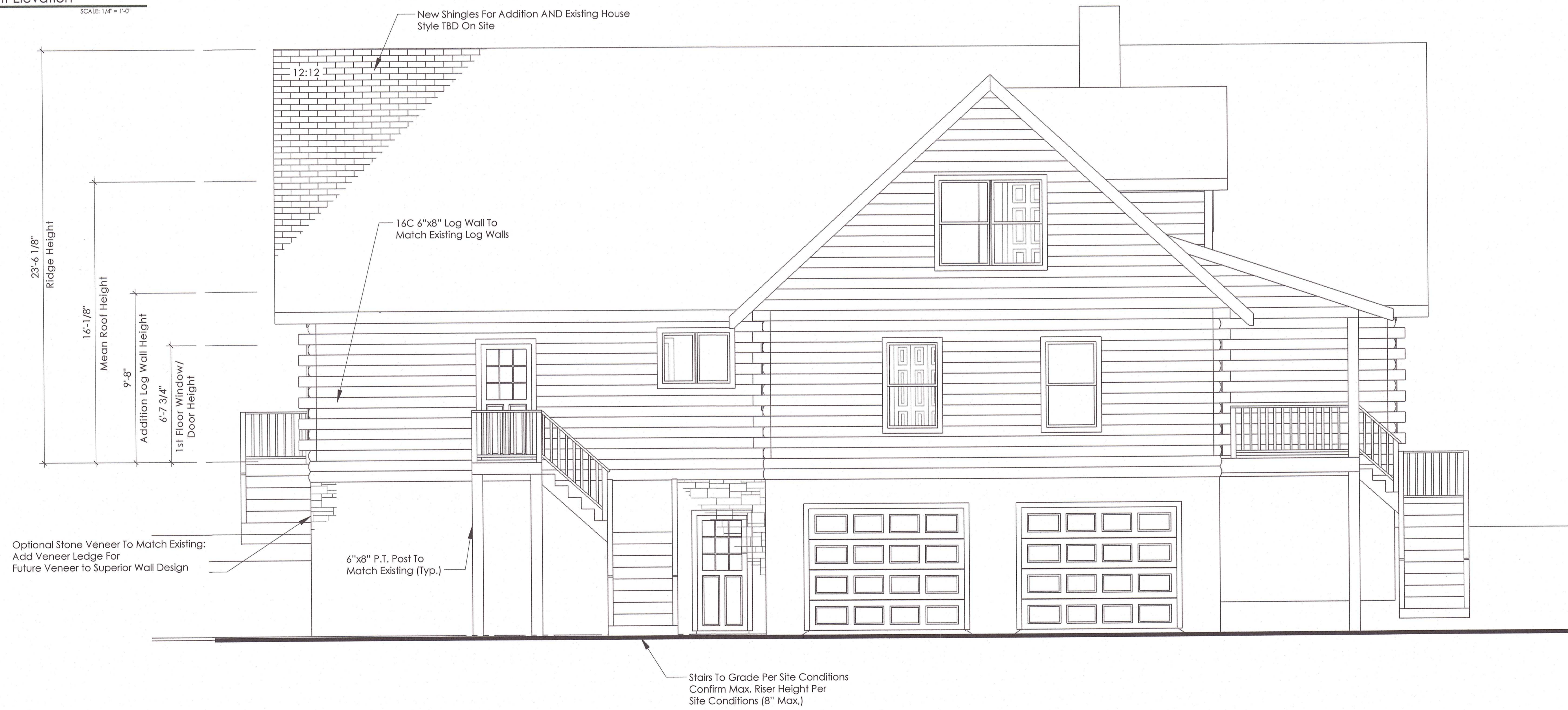




Note: Front Elevation Is Not Changing

1/13 New Front Elevation

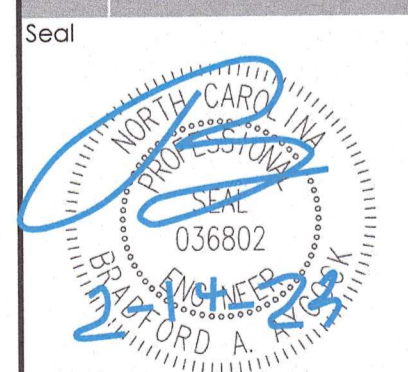
SCALE 1/4" = 1'-0"



Stairs To Grade Per Site Conditions
Confirm Max. Riser Height Per
Site Conditions (8" Max.)

2/13 New Left Elevation

SCALE 1/4" = 1'-0"



Structural Members Only

Project No.
23014
Drawn By
B.A.A.
Publish Date
Feb 14, 2023

Sheet No.
13 of 26