

**1 BUILDING 1 LIFE SAFETY PLAN**  
3/32"=1'-0"

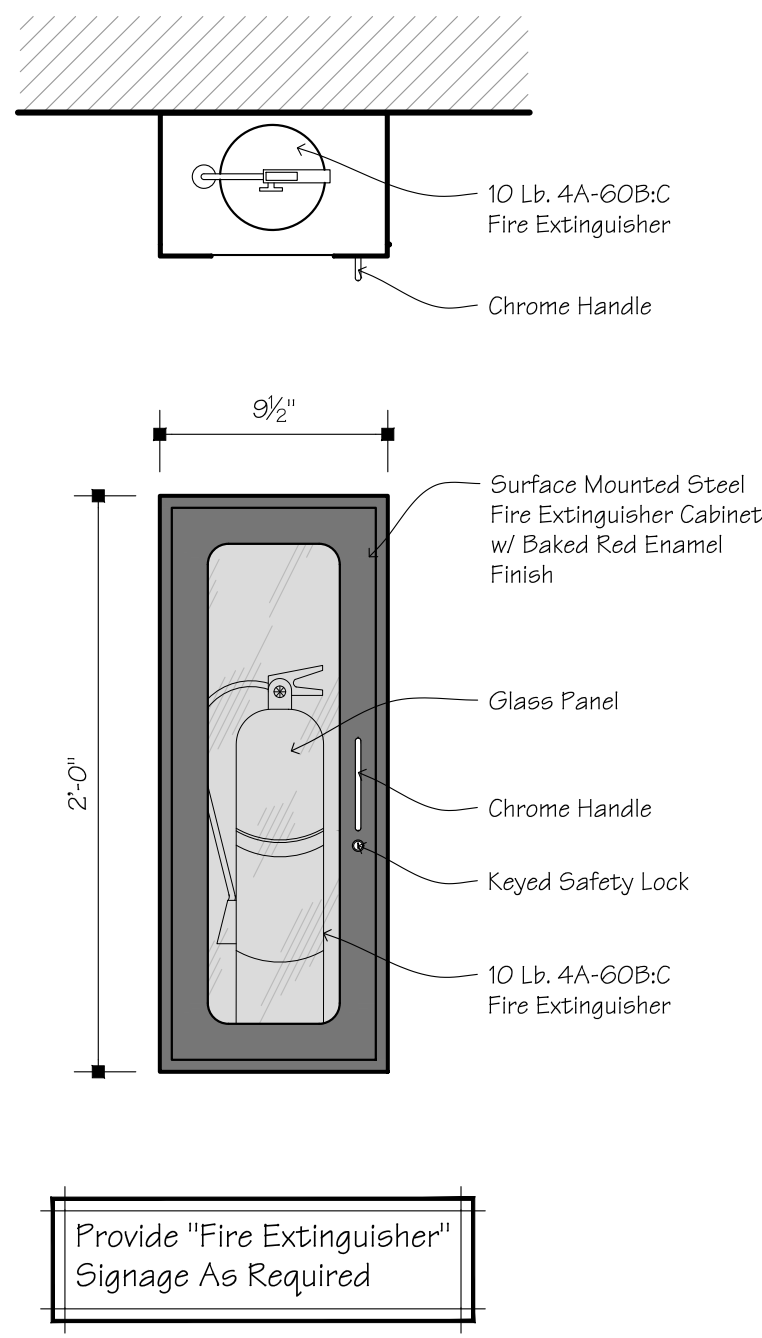
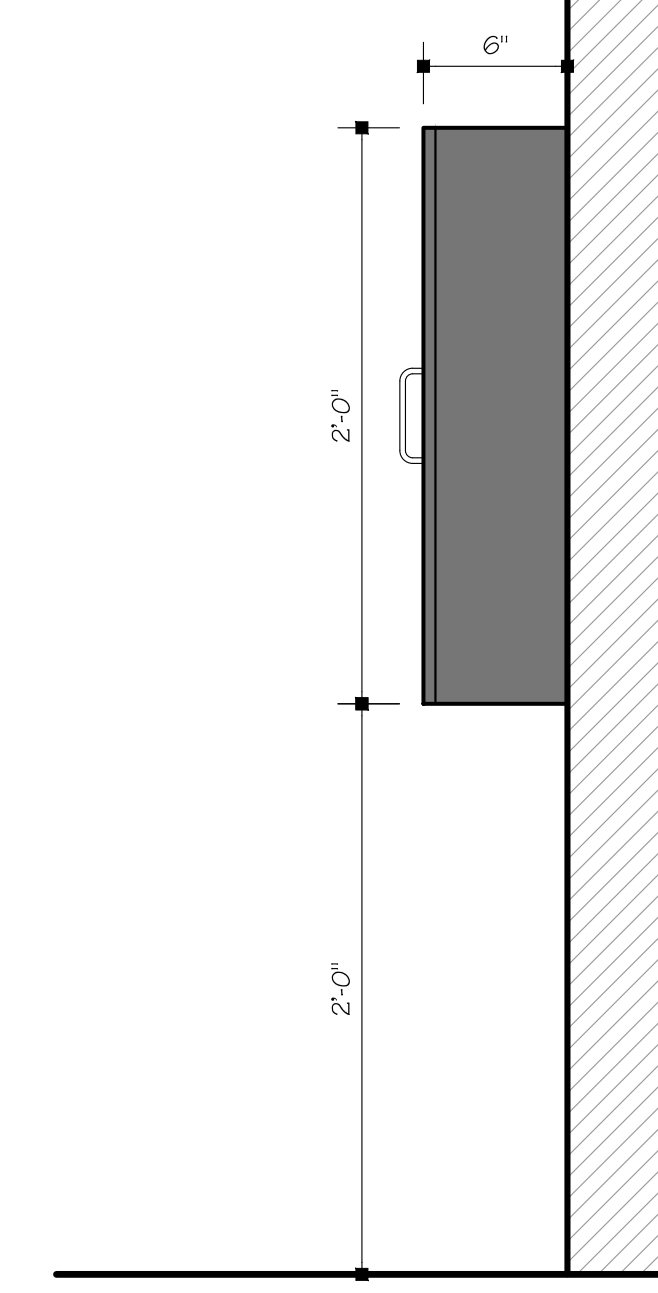
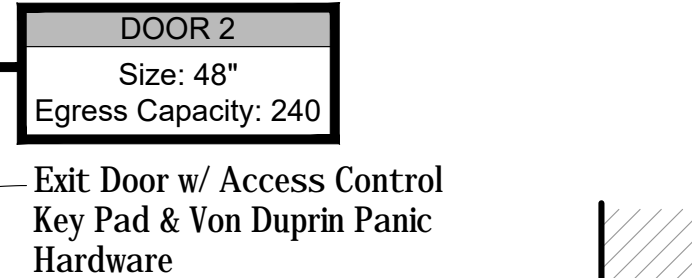
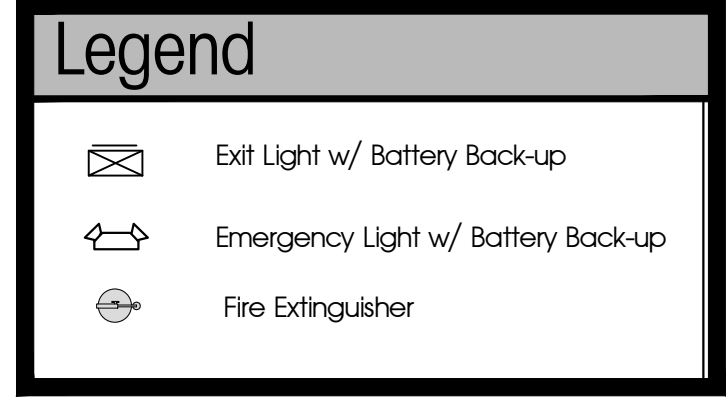
**BUILDING 1**

**Remoteness of Exits**  
Building Diagonal is 211'-7"  
Min Exit Separation Required is 105'-9 1/2"  
Exits are separated by more than one half the building diagonal

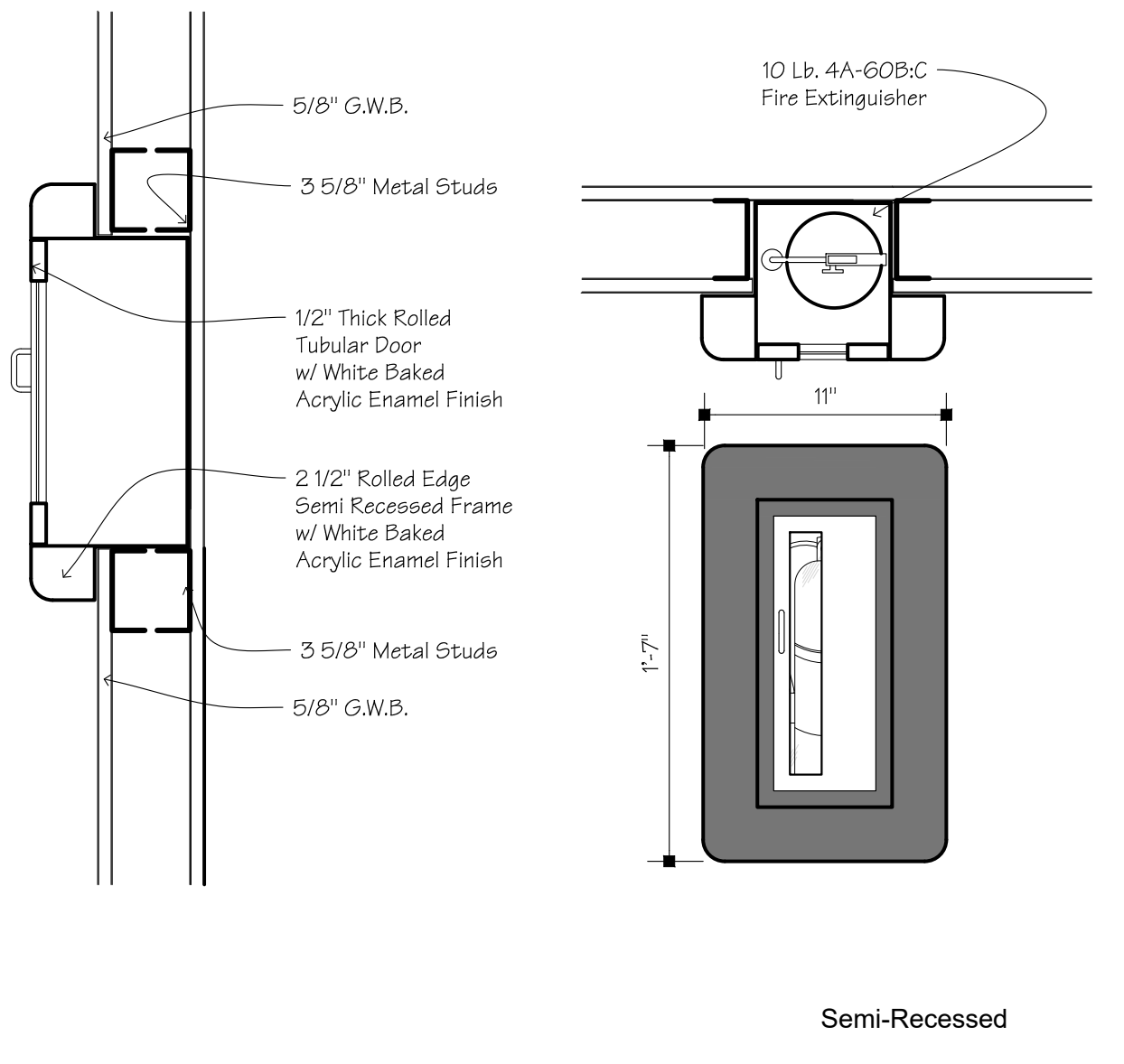
**Maximum Travel Distance**  
Allowable: 200'  
Actual: 175'-6"

**FE Locations**  
Hazard Rating- Moderate  
Max Floor Area Per Fire Extinguisher- 11,250  
Minimum Fire Extinguisher Required- 2  
14 Fire Extinguishers Provided  
Fire Extinguisher Travel Distance- 75'

**Egress Capacity**  
Floor Gross Area- 14,875 Sqft  
Max Floor Area per Occupant  
Storage (14,875 Sqft) -500 Sqft=30  
Total Occupant Load- 30 People  
Required Egress Width per Occupant- 0.2"  
Total Egress Width Required- 6.8"  
Total Egress Width Provided- 144"

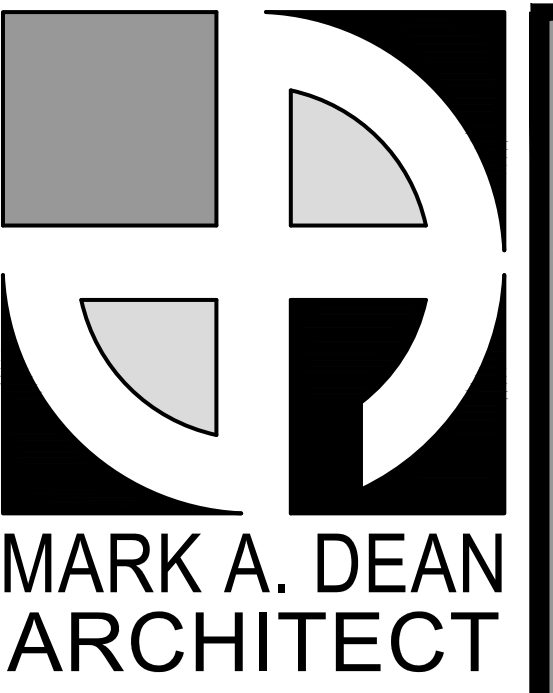


Provide "Fire Extinguisher" Signage As Required



**2 FIRE EXTINGUISHER DETAIL**  
NTS

**3 FIRE EXTINGUISHER DETAIL**  
NTS



**MARK A. DEAN ARCHITECT**



3284 WALDEN AVENUE  
DEPEW, NEW YORK 14043  
PHONE: (716) 651-0381  
FAX: (716) 651-0382

**22-238**

**STORE SPACE**

937 E. Haggard Ave.  
Elon, NC

No.	Description	Date	By
1	ISSUED FOR BID	2-3-23	AB

DATE: 9-3-22  
DRAWN BY: A. Barraclough  
CHECKED BY: M. Dean  
SCALE: 3/32"=1'-0"

**LIFE SAFETY PLAN**  
**TS1.0**