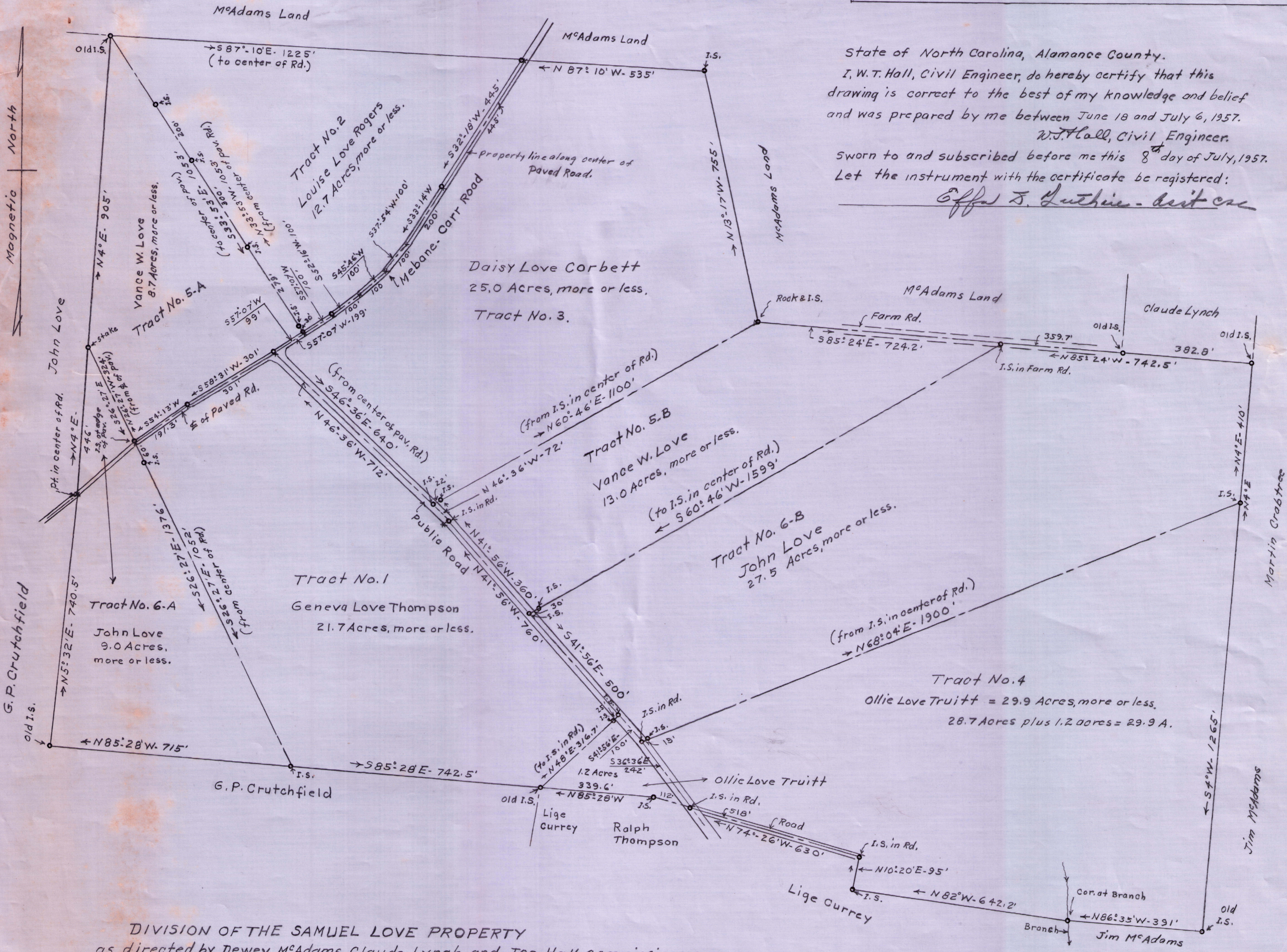


Remarks: All division lines and apart of the outside lines were run by W.T. Hall, C.E., but apart of the outside lines were calculated or taken from the original description: W.T. Hall, C.E.



State of North Carolina, Alamance County.  
 I, W.T. Hall, Civil Engineer, do hereby certify that this drawing is correct to the best of my knowledge and belief and was prepared by me between June 18 and July 6, 1957.  
 W.T. Hall, Civil Engineer.  
 Sworn to and subscribed before me this 8<sup>th</sup> day of July, 1957.  
 Let the instrument with the certificate be registered:  
 Effa S. Guthrie - Dist. Clk.

**DIVISION OF THE SAMUEL LOVE PROPERTY**  
 as directed by Dewey McAdams, Claude Lynch and Joe Hall, Commissioners,  
 appointed by the Clerk of the Superior Court of Alamance County, N. C.  
 Pleasant Grove Township, Alamance County and Cedar Grove Township,  
 Orange County, N. C.  
 Scale: 1" = 200'  
 Survey and drawing by W.T. Hall, Civil Engineer, June 18 to July 6, 1957.

Geneva Love Thompson - Tract No. 1	-	21.7 Acres
Louise Love Rogers - Tract No. 2	-	12.7 "
Daisy Love Corbett - Tract No. 3	-	25.0 "
Ollie Love Truitt - Tract No. 4	-	29.9 "
Vance W. Love - Tracts Nos. 5-A & 5-B	-	21.7 "
John Love - Tracts Nos. 6-A & 6-B	-	36.5 "
<b>Total</b>	<b>=</b>	<b>147.5 Acres</b>