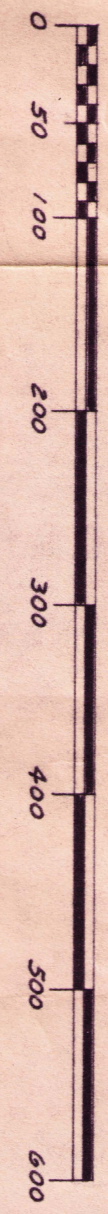


13-24

# FAIRVIEW ESTATES BOONE STATION TOWNSHIP ALAMANCE COUNTY, N. C.

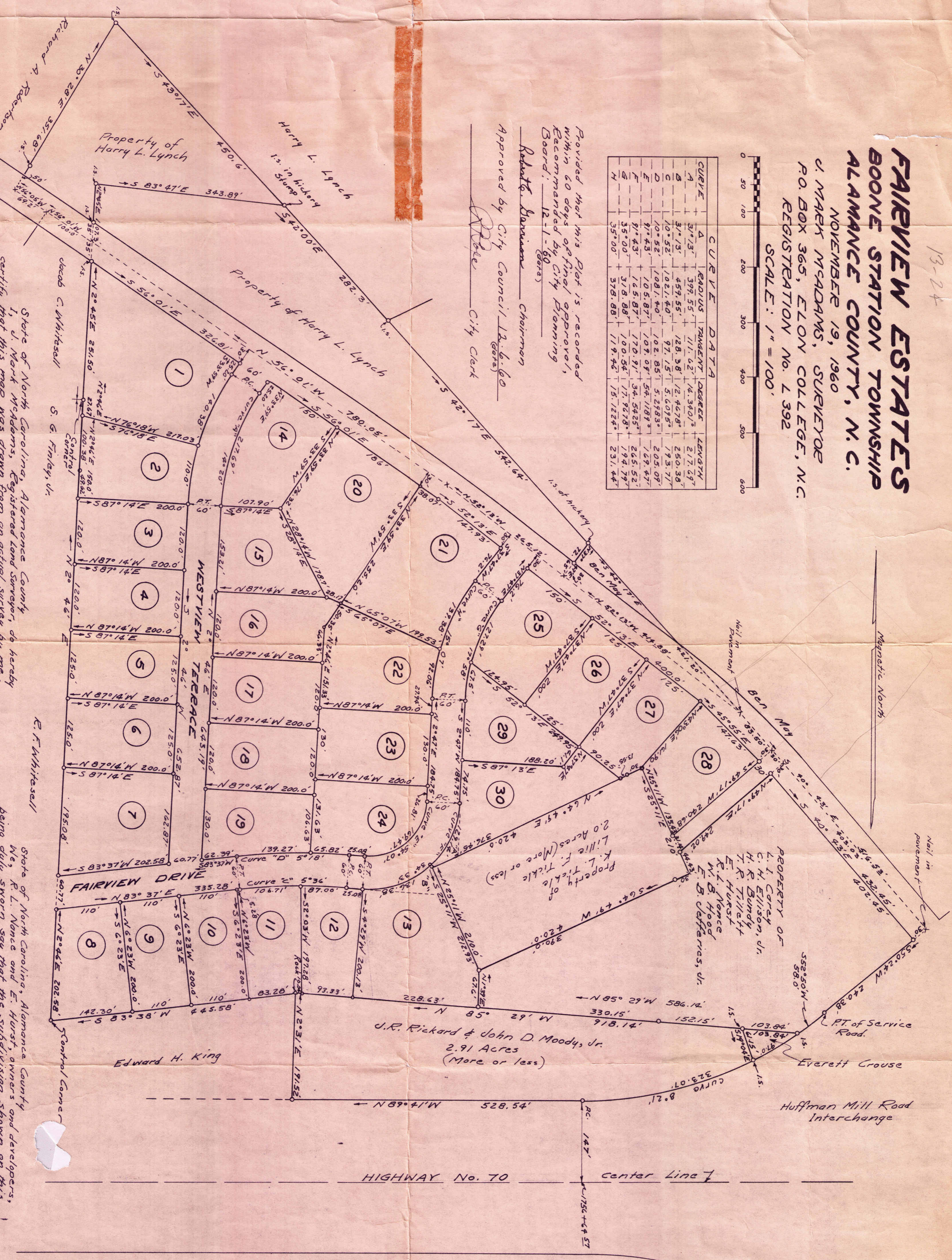
NOVEMBER 19, 1960  
C. MARK MCADAMS, SURVEYOR  
P.O. BOX 365, ELON COLLEGE, N. C.  
REGISTRATION NO. L 392  
SCALE: 1" = 100'



CURVE	RADIUS	CHORD	DEGREE	LENGTH
A	317.5'	597.55'	111.62'	217.69'
B	317.5'	459.55'	128.38'	250.38'
C	100.52'	1021.40'	97.15'	193.71'
D	100.52'	1021.40'	102.85'	203.07'
E	100.52'	1021.40'	109.09'	219.47'
F	100.52'	1021.40'	115.33'	235.87'
G	100.52'	1021.40'	121.57'	252.27'
H	100.52'	1021.40'	127.81'	268.67'

Provided that this Plat is recorded  
within 60 days of final approval,  
Recommended by City Planning  
Board: 12-1-60  
Roberts, Chairman

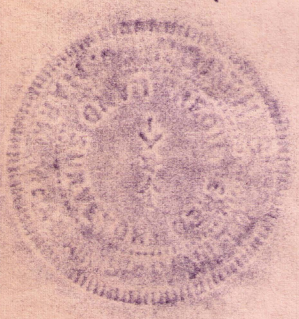
Approved by City Council 12-6-60  
City Clerk



State of North Carolina, Alamance County  
I, C. Mark McAdams, Registered Land Surveyor, do hereby  
certify that this map was drawn from an actual survey by me;  
a dated description of which is recorded in Book \_\_\_\_\_, Page \_\_\_\_\_  
that the error of closure as calculated by latitudes and departures is 1:14,655;  
that this map was prepared in accordance with G.S. 47-30 as amended;  
Witness my hand and seal this 19th day of November 1960.  
C. Mark McAdams  
Registered Surveyor  
Sworn to and subscribed before me this 19th day of November 1960.  
W. K. Barrett  
Notary Public  
My commission expires July 2, 1961.

State of North Carolina, Alamance County  
I, R. L. Nance and E. Hurst, owners and developers,  
being duly sworn, say that the subdivision shown on this  
plat was ordered by us, and that we hereby dedicate all  
streets and easements shown on this plat for the uses  
stipulated;  
R. L. Nance  
E. Hurst  
Sworn to and subscribed before me this \_\_\_\_\_ day of November 1960  
W. K. Barrett  
Notary Public  
My commission expires July 2, 1961.

NOTE: Tracts "A" and "B"  
are reserved by the  
owners for future  
street purposes.



J-201