

06/19/2023

ALTAMAHAW OSSIPEE ELEMENTARY
 2832 N NC HIGHWAY 87, ELON, NC 27244

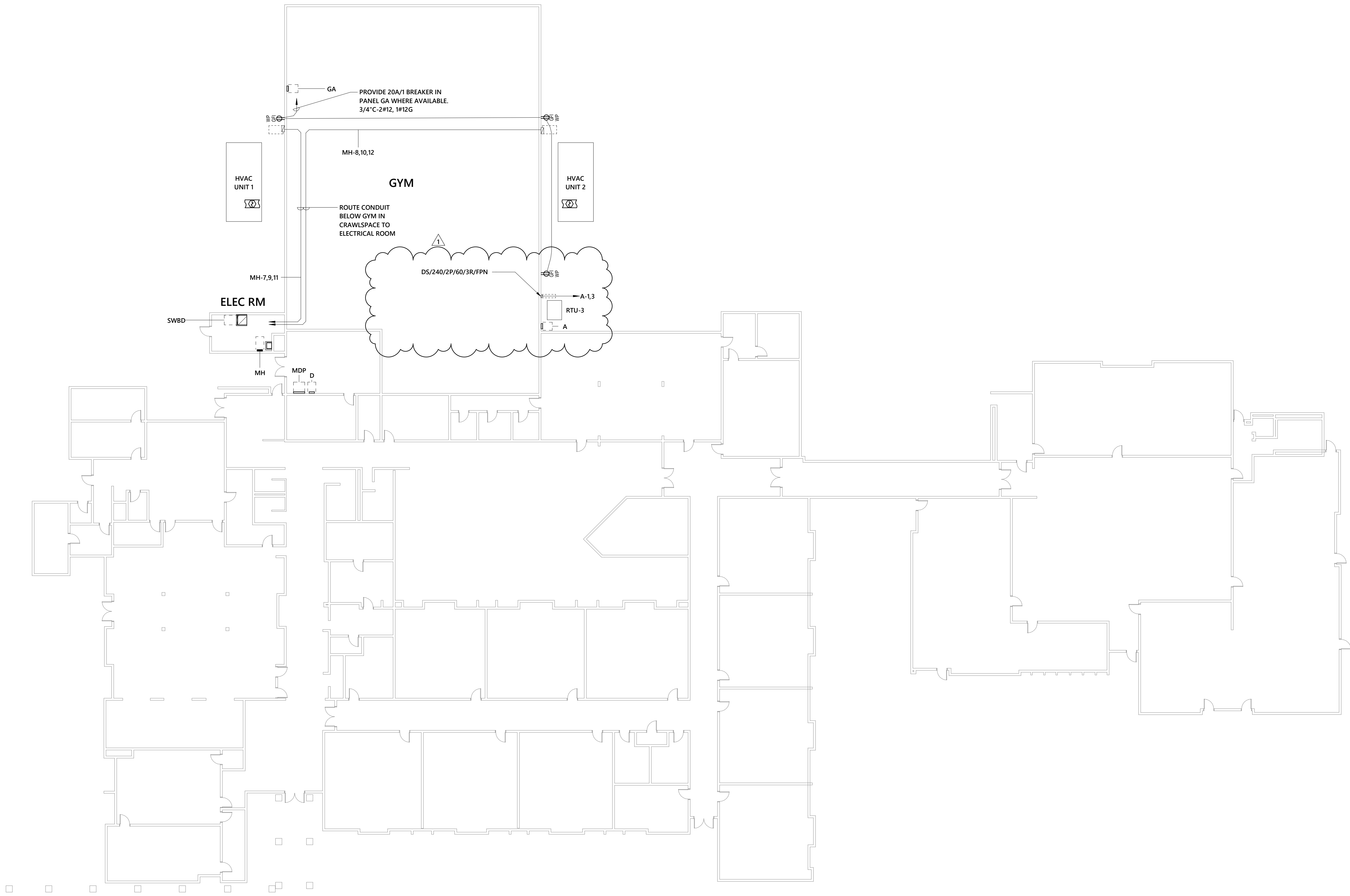
1 06/19/23 Plan Review Comments

MK	DATE	DESCRIPTION
		REVISIONS

POWER FLOOR PLAN

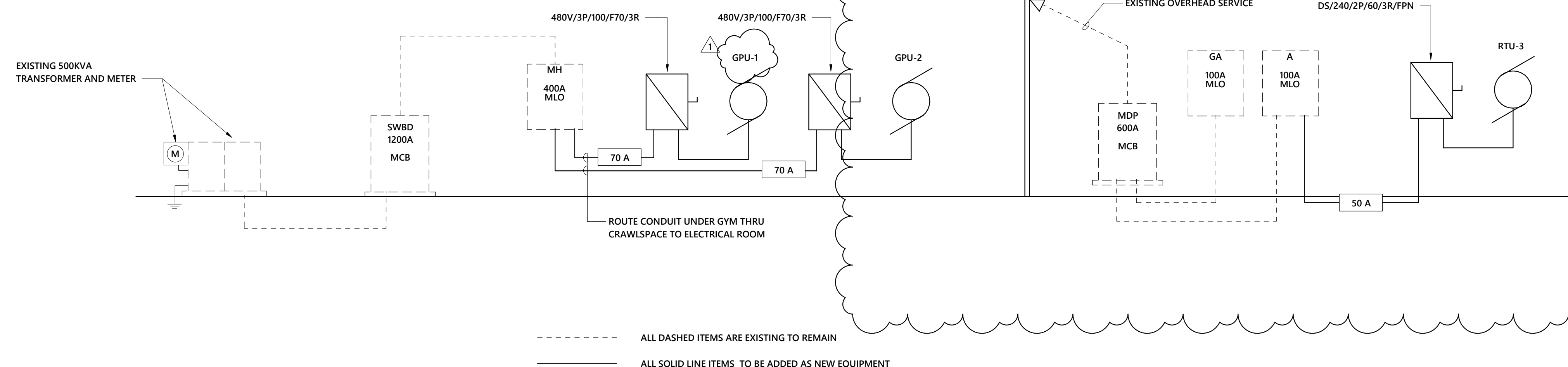
DATE 01/01/2020
 DRAWN BY SAS
 CHECK BY ZFK
 JOB NO. 22-0419
 SHEET

E2.1



1 POWER FLOOR PLAN
 1/16" = 1'-0"

FEEDER SCHEDULE FOR COPPER CONDUCTORS TO SPECIFIC BREAKER SIZE	
FEEDER AMPS	WIRE SIZE TEMP 75°C (CU)
50 A	2#8, 1410G, 3/4" C
70 A	3#6, 1410G, 1" C



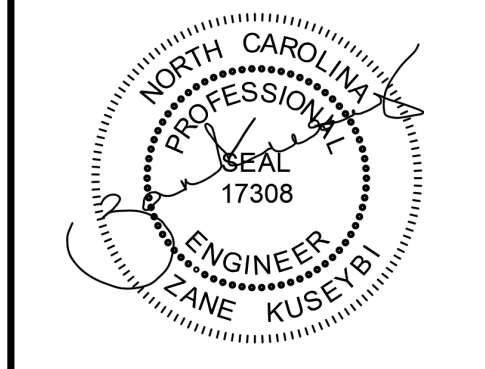
1 POWER RISER DIAGRAM
1/8" = 1'-0"

ALL DASHED ITEMS ARE EXISTING TO REMAIN
ALL SOLID LINE ITEMS TO BE ADDED AS NEW EQUIPMENT

VOLTAGE: 480Y/277 3Ø												PANEL: MH			FED FROM: SWBD		
MOUNTING: SURFACE												MAIN TYPE: MLO			MFR: EXTG		
ENCLOSURE: NEMA1												PHASE: 3			TYPE: EXTG		
MAIN: 400 A												WIRE: 4			AIC: 35 KAIC		
LC Abbr	Load Served	Wire	Trip	Ckt No	Pole	A	B	C	Pole	Ckt No	Trip	Wire	Load Served	LC Abbr			
F	PANEL H5 & H6	3/0	200 A	3	3	6.67	6.67			4	175 A	2/0	PANEL H3 & H4	F			
	GPU-1	6	70 A	9	3	14.90	14.90			10	70 A	6	GPU-2	C			
	SPACE ONLY	-	-	13	1	-	-			14	-	-	SPACE ONLY				
	SPACE ONLY	-	-	15	1	-	-			16	-	-	SPACE ONLY				
	SPACE ONLY	-	-	17	1	-	-			18	-	-	SPACE ONLY				
LOAD		Connected Load	Demand Factor	Estimated Demand		NOTES:											
L	LIGHTS	0.00 kVA	0.00%	0.00 kVA		1. EXISTING PANEL TO REMAIN.											
LE	LIGHTING - EXTERIOR	0.00 kVA	0.00%	0.00 kVA		2. BOLD INDICATES NEW WORK.											
H	HEATING	0.00 kVA	0.00%	0.00 kVA													
C	COOLING	89.40 kVA	100.00%	89.40 kVA													
V	VENTILATION	0.00 kVA	0.00%	0.00 kVA													
M	MOTORS	0.00 kVA	0.00%	0.00 kVA													
K	KITCHEN	0.00 kVA	0.00%	0.00 kVA													
R	RECEPTACLES	0.00 kVA	0.00%	0.00 kVA													
WH	WATER HEATER	0.00 kVA	0.00%	0.00 kVA													
MS	MISC.	40.00 kVA	100.00%	40.00 kVA													
S	Spare	0.00 kVA	0.00%	0.00 kVA													
E	ELEVATOR	0.00 kVA	0.00%	0.00 kVA													
LD	LAUNDRY	0.00 kVA	0.00%	0.00 kVA													
EV	EV CHARGING	0.00 kVA	0.00%	0.00 kVA													
TOTAL KVA...		129.40 kVA	TOTAL PER PHASE: (CONNECTED)			LOAD CLASSIFICATION ABBREVIATIONS (CONT.)											
TOTAL KVA (DEMAND):		129.40 kVA	155.7 A	155.7 A	155.7 A	F - FEEDER FOR DOWN STREAM PANEL. LOADS ARE INCLUDED IN THE PANEL LOAD SUMMARY.											
TOTAL AMP...		156 A															
TOTAL AMP. (DEMAND):		156 A															

VOLTAGE: 120/240 1Ø												PANEL: MDP			FED FROM: MDP		
MOUNTING: SURFACE												MAIN TYPE: MCB			MFR: EXTG		
ENCLOSURE: NEMA1												PHASE: 1			TYPE: EXTG		
MAIN: 600 A												WIRE: 3			AIC: 65 KAIC		
LC Abbr	Load Served	Wire	Trip	Ckt No	Pole	A	B	C	Pole	Ckt No	Trip	Wire	Load Served	LC Abbr			
F	PANEL B	10	30 A	1	2	2.25	2.25			2	30 A	10	PANEL D	F			
F	PANEL A	1	100 A	5	2	7.20	6.00			6	100 A	1	PANEL C	F			
F	TO GUTTER IN SHOP	1	100 A	7	2	6.00	6.00			10	100 A	1	TO GUTTER IN SHOP	F			
F	TO PRESENT HOME EC BLDG	3/0	200 A	13	2	12.00	-			14	-	-	SPACE ONLY				
				15	2					16	-	-	SPACE ONLY				
LOAD		Connected Load	Demand Factor	Estimated Demand		NOTES:											
L	LIGHTS	0.00 kVA	0.00%	0.00 kVA		1. EXISTING PANEL TO REMAIN.											
LE	LIGHTING - EXTERIOR	0.00 kVA	0.00%	0.00 kVA		2. BOLD INDICATES NEW WORK.											
H	HEATING	0.00 kVA	0.00%	0.00 kVA													
C	COOLING	14.40 kVA	100.00%	14.40 kVA													
V	VENTILATION	0.00 kVA	0.00%	0.00 kVA													
M	MOTORS	0.00 kVA	0.00%	0.00 kVA													
K	KITCHEN	0.00 kVA	0.00%	0.00 kVA													
R	RECEPTACLES	0.00 kVA	0.00%	0.00 kVA													
WH	WATER HEATER	0.00 kVA	0.00%	0.00 kVA													
MS	MISC.	69.00 kVA	100.00%	69.00 kVA													
S	Spare	0.00 kVA	0.00%	0.00 kVA													
E	ELEVATOR	0.00 kVA	0.00%	0.00 kVA													
LD	LAUNDRY	0.00 kVA	0.00%	0.00 kVA													
EV	EV CHARGING	0.00 kVA	0.00%	0.00 kVA													
TOTAL KVA...		83.40 kVA	TOTAL PER PHASE: (CONNECTED)			LOAD CLASSIFICATION ABBREVIATIONS (CONT.)											
TOTAL KVA (DEMAND):		83.40 kVA	347.5 A	347.5 A	0.0 A	F - FEEDER FOR DOWN STREAM PANEL. LOADS ARE INCLUDED IN THE PANEL LOAD SUMMARY.											
TOTAL AMP...		348 A															
TOTAL AMP. (DEMAND):		348 A															

VOLTAGE: 120/240 1Ø												PANEL: A			FED FROM: MDP		
MOUNTING: SURFACE												MAIN TYPE: MLO			MFR: EXTG		
ENCLOSURE: NEMA1												PHASE: 1			TYPE: EXTG		
MAIN: 100 A												WIRE: 3			AIC: 10 KAIC		
LC Abbr	Load Served	Wire	Trip	Ckt No	Pole	A	B	C	Pole	Ckt No	Trip	Wire	Load Served	LC Abbr			
C	RTU-3	6	50 A	1	2	4.00	-			1	2	-	SPACE ONLY				
				3	2		4.00			1	4	-	SPACE ONLY				
C	AHU (#3)	8	40 A	5	2	3.20	-			1	6	-	SPACE ONLY				
				7	2		3.20			1	8	-	SPACE ONLY				
	SPACE ONLY	-	-	9	1	-	-			1	10	-	SPACE ONLY				
	SPACE ONLY	-	-	11	1	-	-			1	12	-	SPACE ONLY				
LOAD		Connected Load	Demand Factor	Estimated Demand		NOTES:											
L	LIGHTS	0.00 kVA	0.00%	0.00 kVA		1. EXISTING PANEL TO REMAIN.											
LE	LIGHTING - EXTERIOR	0.00 kVA	0.00%	0.00 kVA		2. BOLD INDICATES NEW WORK.											
H	HEATING	0.00 kVA	0.00%	0.00 kVA		3. BREAKER TO BE REMOVED.											
C	COOLING	14.40 kVA	100.00%	14.40 kVA													
V	VENTILATION	0.00 kVA	0.00%	0.00 kVA													
M	MOTORS	0.00 kVA	0.00%	0.00 kVA													
K	KITCHEN	0.00 kVA	0.00%	0.00 kVA													
R	RECEPTACLES	0.00 kVA	0.00%	0.00 kVA													
WH	WATER HEATER	0.00 kVA	0.00%	0.00 kVA													
MS	MISC.	0.00 kVA	0.00%	0.00 kVA													
S	Spare	0.00 kVA	0.00%	0.00 kVA													
E	ELEVATOR	0.00 kVA	0.00%	0.00 kVA													
LD	LAUNDRY	0.00 kVA	0.00%	0.00 kVA													
EV	EV CHARGING	0.00 kVA	0.00%	0.00 kVA													
TOTAL KVA...		14.40 kVA	TOTAL PER PHASE: (CONNECTED)			LOAD CLASSIFICATION ABBREVIATIONS (CONT.)											
TOTAL KVA (DEMAND):		14.40 kVA	60.0 A	60.0 A	0.0 A	F - FEEDER FOR DOWN STREAM PANEL. LOADS ARE INCLUDED IN THE PANEL LOAD SUMMARY.											
TOTAL AMP...		60 A															
TOTAL AMP. (DEMAND):		60 A															



06/19/2023

ALTAMAHAW OSSISPEE ELEMENTARY
2832 N NC HIGHWAY 87, ELON, NC 27244

MK	DATE	DESCRIPTION
1	06/19/23	Plan Review Comments

ELECTRICAL DIAGRAMS

DATE	04/06/2023
DRAWN BY	SAS
CHECK BY	ZFK
JOB NO.	22-0419
SHEET	

E7.1

C:\Users\lindsey\Documents\2023\Altamahaw-Ossipee-Elementary-EP-RDZ-Final\lindsey@lindseyarchitecture.com.rvt