

GENERAL NOTES

1. MATERIAL SUPPLIER: NANAWALL SYSTEMS INC. ("NANAWALL") IS A MATERIAL SUPPLIER OF FOLDING & FOLDING PANEL SYSTEMS. NANAWALL DOES NOT PROVIDE INSTALLATION SERVICES OR DESIGNING UNDER SURROUNDING CONDITIONS AROUND THE OPENING TO WHICH NANAWALL'S SYSTEMS ARE TO BE INSTALLED. ANY SURROUNDING CONDITIONS SHOWN IN THESE DRAWINGS ARE MEANT FOR ILLUSTRATIVE PURPOSES ONLY AND WHAT IS SHOWN MAY NOT BE SUITABLE FOR ANY PARTICULAR PROJECT.

2. CUSTOMER RESPONSIBILITY: IT IS THE SOLE RESPONSIBILITY OF THE ARCHITECT, BUILDING OWNER, CONTRACTOR AND/OR CONSUMER (COLLECTIVELY "CUSTOMER") TO ENSURE COMPLIANCE WITH PROJECT PLANS AND SPECIFICATIONS AS WELL AS ALL APPLICABLE CODES AND REGULATIONS, INCLUDING FEDERAL, STATE AND LOCAL REQUIREMENTS. IT IS THE SOLE RESPONSIBILITY OF CUSTOMER TO DETAIL AND INSTALL NANAWALL PRODUCT IN AN OPENING WITH PROPER STRUCTURAL INTEGRITY AND FLASHING DETAILS NECESSARY TO ENSURE A WATER RESISTANT INSTALLATION.

3. ASSEMBLY & INSTALLATION: PRODUCTS ARE SUPPLIED "KNOCKED DOWN" FOR ASSEMBLY AND INSTALLATION BY OTHERS. PROPER ASSEMBLY, INSTALLATION, OPERATION AND MAINTENANCE IS ESSENTIAL FOR PROPER PERFORMANCE. WRITTEN INSTRUCTIONS ARE PROVIDED TO ALL CUSTOMERS TO FOLLOW. IT IS HIGHLY RECOMMENDED THAT AN EXPERIENCED INSTALLER OF NANAWALL'S PRODUCTS BE USED FOR RELEVANT ASPECTS OF ASSEMBLY AND INSTALLATION.

THE ROUGH OPENINGS MUST BE PLUMB, LEVEL, SQUARE AND WITHIN SPECIFIED BUILDING TOLERANCES. HEAD TRACK AND SILL (BOTTOM TRACK) COMPONENTS MAY BE SHIPPED IN SEGMENTS THAT WILL NEED TO BE FIELD JOINED PER NANAWALL INSTRUCTIONS. MAKE SURE THAT WHEN INSTALLED, THE JOINTS BETWEEN THE HEAD TRACK AND SILL COMPONENTS ARE SMOOTH AND TIGHT.

CUSTOMER IS REQUIRED TO FOLLOW PUBLISHED NANAWALL INSTALLATION INSTRUCTIONS. PRODUCT PLACEMENT, FASTENERS, FLASHING, WATERPROOFING, SEALANT AND OTHER DETAILS FOR SPECIFIC SURROUNDING CONDITIONS MUST BE DESIGNED AND PROVIDED BY OTHERS.

4. STRUCTURAL SUPPORT: THE STRUCTURAL INTEGRITY OF THE FLOOR, HEADER AND/OR OVERHEAD SUPPORT FOR THE OPENING, AND ANY STACKING AREAS, IS CRITICAL FOR PROPER PERFORMANCE AND OPERATION. THE CALCULATIONS, MATERIALS AND INSTALLATION DETAILS MUST BE PROVIDED BY OTHERS.

THE VERTICAL DEFLECTION AT THESE AREAS UNDER FULL LIVE AND DEAD LOADS SHOULD BE THE LESSER OF L/220 OF THE SPAN OR 1/4". THE HEADER, SURROUNDING WALLS AND FLOOR MUST ALSO BE ABLE TO SUPPORT ANY LATERAL LOADS, PERMETER FASTENERS AND SUBSTRATE MUST BE CAPABLE OF WITHSTANDING REACTION FORCES IMPOSED BY WIND AND/OR DEAD LOAD. THERE MAY BE ADDITIONAL STRUCTURAL REQUIREMENTS NOT MENTIONED HERE.

SPECIFIC AND DETAILED STRUCTURAL SUPPORT REQUIREMENTS MUST BE PROVIDED BY OTHERS, INCLUDING, BUT NOT LIMITED TO, SIZES, LOCATIONS OR FREQUENCY OF PERMETER FASTENERS; ANCHORING TO THE SUBSTRATE; STRUCTURAL CALCULATIONS; AND ENGINEERING OF DETAILED ALUMINUM, WOOD AND GLASS SYSTEMS.

6. UNIT SIZES & ROUGH OPENING: CHECK SIZES ON DRAWINGS CAREFULLY AND NOTE THE MEASUREMENT POINTS FOR UNIT WIDTH AND UNIT HEIGHT. APPROPRIATE SHIM SPACE MUST BE ADDED ON ALL FOUR (4) SIDES OF THE OPENING TO OBTAIN THE ROUGH OPENINGS. NOTE THE POSITION OF THE SILL RELATIVE TO THE FINISH FLOOR OR FINISH COUNTERTOP. ANY CHANGES ON WIDTH OR HEIGHT WILL REQUIRE REVISED DRAWINGS FOR FINAL APPROVAL.

8. ORIENTATION OF DRAWINGS, ELEVATIONS ARE VIEWED FROM THE INTERIOR FOR ALL NANAWALL SYSTEMS, WITH THE EXCEPTION OF THE HSW16, FSW16 AND CSW16 WHICH ARE VIEWED FROM THE EXTERIOR. CAREFULLY CHECK THE CONFIGURATIONS SHOWN FOR ACCURACY, INCLUDING NUMBER OF PANELS ON EACH SIDE OF THE OPENING AND DIRECTION OF SWING. FOR FOLDING SYSTEMS, THERE MUST BE AN ODD NUMBER OF PANELS IN EITHER DIRECTION TO HAVE A SWING PANEL THAT CAN BE OPERATED LIKE A MAIN DOOR.

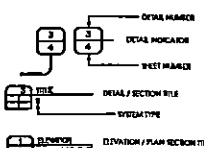
7. PRODUCT PERFORMANCE & TESTING: NANAWALL HAS NOT TESTED EACH PRODUCT FOR AIR LEAKAGE, WATER RESISTANCE AND STRUCTURAL LOADING CAPABILITIES. TESTING RESULTS AVAILABLE FROM NANAWALL ARE ONLY APPLICABLE FOR THE SPECIFIC UNITS AND CONFIGURATIONS TESTED IN LABORATORY CONDITIONS. TEST RESULTS WILL DEPEND ON VARIABLES SUCH AS THE SYSTEM, SILL, LOCKING MECHANISM, SIZE AND CONFIGURATION.

DEPENDING ON SITE CONDITIONS, SILLS MAY NEED TO BE SITE MODIFIED BY OTHERS WITH WEEP HOLES FOR PROPER DRAINAGE. THE HIGH PERFORMANCE (PAISED) SILL IS CAPABLE OF A HIGHER WATER RESISTANCE CAPABILITY. NON-STANDARD UNITS, E.G. SEGMENTED OR CORNERLESS UNITS, WILL HAVE A LOWER PERFORMANCE RATING THAN A STANDARD UNIT. SEE NANAWALL LITERATURE AND WEBSITE FOR FURTHER INFORMATION.

ABBREVIATIONS

- AH = ABOVE FINISH FLOOR
- C = CENTER LINE
- DIM = DIMENSION
- DLO = DAYLIGHT OPENING
- DO = DOOR OPENING
- EI = ELEVATION
- EQ = EQUAL
- FS = FRAME SIZE
- FF = FINISH FLOOR
- MM = MINUTES
- NSH = NOT BY NANAWALL
- NTS = NOT TO SCALE
- OD = OPENING DIMENSION
- OD = OVERALL FRAME DIMENSION
- RO = ROUGH OPENING
- SOL = 3/4" JALUSED DIVIDED LIFE
- TBD = TO BE DETERMINED
- UW = UNIT WIDTH

SYMBOLS



NANAWALL PRODUCT DRAWINGS

QUOTE NUMBER: 557225

ORDER NUMBER: 0

PROJECT NAME: LaDelle Residence - Mebane, NC

CUSTOMER: Cindy LaDelle

SYSTEM INFORMATION

SYSTEM ON THIS DRAWING: MW ALUMINUM 640 FOLDING SYSTEM (ALU)

CONFIGURATION: OUTWARD 5 LEFT

TYPE OF GLASS: DOUBLE GLAZED LOW E INSULATED TEMPERED 70

GLASS SPACER BAR FINISH: SILVER GREY

HARDWARE FIRST OPENING PANEL(S): MULTI-POINT LOCKING WITH LATCH, DEADBOLT, AND LEVER HANDLES ON BOTH SIDES ON SWING PANEL (DOES NOT UNLOCK WITH ONE MOTION)

HARDWARE FINISH FIRST OPENING PANEL(S): STAINLESS STEEL WITH BRUSHED SATIN FINISH.

HARDWARE AND FINISH ON SECONDARY PANEL(S): 2 POINT LOCKING WITH FLAT HANDLE STAINLESS STEEL WITH BRUSHED SATIN FINISH

HINGE FINISH: CLEAR ANODIZED

SILL TYPE: THERMALLY BROKEN LOW PROFILE SADDLE (FOR RESISTANCE AGAINST WIND DRIVEN RAIN, WEEP HOLES AND DRAIN CONNECTIONS BY OTHERS NECESSARY.)

SILL FINISH: CLEAR ANODIZED

PROFILE FINISH SCHEDULE

DESCRIPTION	FINISH
WOOD	
ANODIZED ALUMINUM	
POWDER COATED ALUMINUM	

NANAWALL STANDARD POWDER COATED COLOR: CHOOSE FROM STANDARD AND CUSTOM

NOTE: AN INDIVIDUAL SHEET OF COLOR/TEXT VARIATION CAN BE REQUESTED IN VARIOUS COMPONENTS OF PRODUCT TO DETERMINE MATERIAL AND VARIATION FROM ANY SAMPLE PROVIDED. FOR BESSON PRODUCTS, THE COLOR AND FINISH FOR VAST, FEN, WEN, AND WEN FEN IS WOOD.

NOTES:

GENERAL NOTES - continued

A WATER RATIO IS RELATIVE AND EVEN THE HIGHEST RATED PRODUCT MIGHT LEAK UNDER SEVERE, UNUSUAL, OR UNFORESEEN CLIMATIC CONDITIONS. PERFORMANCE OF NANAWALL PRODUCTS DEPENDS ON PROPER INSTALLATION AND USE OF THE PRODUCTS, AS WELL AS SELECTION OF THE PROPER SYSTEM FOR THE SITE CONDITIONS.

NANAWALL WILL NOT BE RESPONSIBLE FOR ANY COSTS ASSOCIATED WITH FIELD TESTING OF ANY NANAWALL PRODUCT. ANY TESTING OF NEWLY INSTALLED PRODUCT MUST BE PERFORMED IN COMPLIANCE WITH AAMA 502, INCLUDING WATER PENETRATION TESTING AT 20 TESTED LABORATORY PERFORMANCE. NANAWALL WILL REIMBURSE ANY PRODUCT FAILURE IT CONFIRMS. FAILURE OF TESTED PRODUCT DOES NOT EQUATE TO A FAILURE OF OTHER PRODUCTS. TESTING OF PRODUCT INSTALLED LONGER THAN SIX (6) MONTHS MUST BE TESTED IN COMPLIANCE WITH AAMA 511 AND BE DIRECTED AT RECREATION OF AN EXISTING IN-SERVICE CONDITION.

BUYER TO CONFIRM FROM APPLICABLE NANAWALL DESIGN WINDLOAD CHARTS THAT POSITIVE AND NEGATIVE DESIGN PRESSURES FOR THE PROJECT ARE MET FOR THE PANEL SIZES OF THE UNITS IN THE ORDER. THESE WINDLOAD CHARTS HAVE BEEN DERIVED FROM COMPARATIVE ANALYSIS OF STRUCTURAL LOAD TEST RESULTS PER ASTM E330 OF A TEST SPECIMEN. THE USE OF THESE WINDLOAD CHARTS WILL BE SUBJECT TO THE LIMITATIONS STATED ON THEM.

6. PROTECTION: ALL GLASS AND FINISHED MATERIAL MUST BE PROTECTED DURING THE CONSTRUCTION PHASE FROM ALL TYPES OF CONSTRUCTION OPERATIONS SUCH AS CEMENT SPLATTER, TAR, PAINT, WELDING OPERATIONS, FIREPROOFING OR ANY OTHER PROCESS THAT MAY BE HARMFUL TO THE APPEARANCE OR PERFORMANCE OF THE PROJECT MATERIALS.

8. UNLOADING PRODUCT: FOR STANDARD DELIVERY, UNLOADING OF PRODUCT FROM THE DELIVERY TRUCK IS THE RESPONSIBILITY OF BUYER. DUE TO THE WEIGHT OF THE PRODUCT, APPROPRIATE MANPOWER AND/OR EQUIPMENT WILL BE NEEDED.

10. TEMPERED GLASS: ON RARE OCCASIONS, TEMPERED GLASS PANE'S SPONTANEOUSLY BREAK FOR NO APPARENT REASON. ONE POSSIBLE CAUSE IS NICKEL SULFIDE INCLUSIONS IN TEMPERED GLASS THAT CANNOT BE COMPLETELY PREVENTED. IN NANAWALL ALL GLASS SYSTEMS WITH NO VERTICAL STILES, AND OTHER POSSIBLE REASON FOR SPONTANEOUS GLASS BREAKAGE IS STRESS CONCENTRATIONS AROUND NICKS OR CHIPS NEAR THE EDGE OF THE GLASS PANE'S. PANELS SHOULD BE MOVED WITH CARE TO PREVENT GLASS-TO-GLASS CONTACT BETWEEN PANELS. INSTALL THE GLASS PROTECTOR GASKETS PROVIDED BY NANAWALL TO MINIMIZE THE CHANCE OF BREAKAGE SHOULD GLASS CONTACT OCCUR. ANY DAMAGED GLASS PANE'S ARE NOT THE RESPONSIBILITY OF NANAWALL AND SHOULD BE REPLACED AS SOON AS POSSIBLE.

11. NANAWALL DRAWINGS: THESE COPYRIGHTED DRAWINGS HAVE BEEN PREPARED IN ACCORDANCE WITH NANAWALL'S ORDER AGREEMENT AND ANY ACCEPTED CHANGE ORDER. FINAL APPROVAL BY THE BUYER CONSTITUTES ACCEPTANCE OF ALL DEVIATIONS TO THE CONTRACT DOCUMENTS MADE BY NANAWALL IN THESE DRAWINGS.

THESE DRAWINGS REPRESENT NANAWALL'S INTERPRETATION OF THE APPLICATION OF PRODUCTS TO THIS PROJECT IN FUNCTIONAL COMPLIANCE WITH THE ORDER AGREEMENT. IT IS IMPORTANT THAT THIS INTERPRETATION BE REVIEWED DIMENSIONALLY AND FUNCTIONALLY WITH RESPECT TO THE ARCHITECT'S ACTUAL INTENT, INTERFACING CONDITIONS, MATERIALS AND JOB SITE CONDITIONS. NANAWALL ASSUMES NO RESPONSIBILITY FOR ERRORS RESULTING FROM THE USE OF THESE DRAWINGS BY OTHER TRADES.

ANY CHANGES IN DIMENSIONS, DESIGN OR LAYOUT MADE AFTER PRODUCT DRAWINGS ARE PREPARED MAY RESULT IN THE NEED FOR REVISED DRAWINGS. REVISED DRAWINGS WILL RESULT IN AN EXTRA CHARGE TO BE DETERMINED BY NANAWALL AND PAID BY CUSTOMER BEFORE THE DRAWINGS ARE REVISED.

ALL DRAWINGS ARE ACCURATE IN METRIC DIMENSIONS. ENGLISH DIMENSIONS SHOWN ARE ROUNDED TO THE NEAREST 1/16". PRODUCT DRAWINGS SHOULD NOT BE SCALED. SCALE NOTED ON DRAWINGS ARE BASED ON A 24" X 36" PAPER FORMAT.

12. UNAUTHORIZED USE OF DRAWINGS: IN NO EVENT SHALL BUYER DISCLOSE, COPY OR USE ANY OF THE PRODUCT DRAWINGS PREPARED BY NANAWALL FOR ANY PURPOSE OTHER THAN IN RELATION TO THE PURCHASE OR INSTALLATION OF NANAWALL PRODUCT. ANY OTHER USE OF THESE PRODUCT DRAWINGS IS EXPRESSLY PROHIBITED WITHOUT THE PRIOR WRITTEN CONSENT OF NANAWALL. NANAWALL IS ENTITLED TO LIQUIDATED DAMAGES IN THE AMOUNT OF 20% OF THE PURCHASE PRICE OF THE CONTRACT FOR SALE FOR EACH VIOLATION.

IF YOU WOULD LIKE TO RECEIVE ELEVATION, FLOOR PLAN AND CROSS SECTION DETAILS IN AUTOCAD, PLEASE CONTACT NANAWALL.

SHEET INDEX

NO.	DESCRIPTION	EXTRA INFORMATION
1	COVER SHEET	
2	INSTALLATION DETAILS SHEET(S)	INFC
3	ELEVATIONS & PLAN SECTIONS	SHGC
4	DETAIL SHEET(S)	DESIGN PRESSURE C/D

NanaWall
 10000 N. W. 10th Ave., Suite 100
 Ft. Lauderdale, FL 33309
 Tel: 954.575.1111
 Fax: 954.575.1112
 Email: info@nanawall.com

DATE	APPROVAL	BY:	DATE

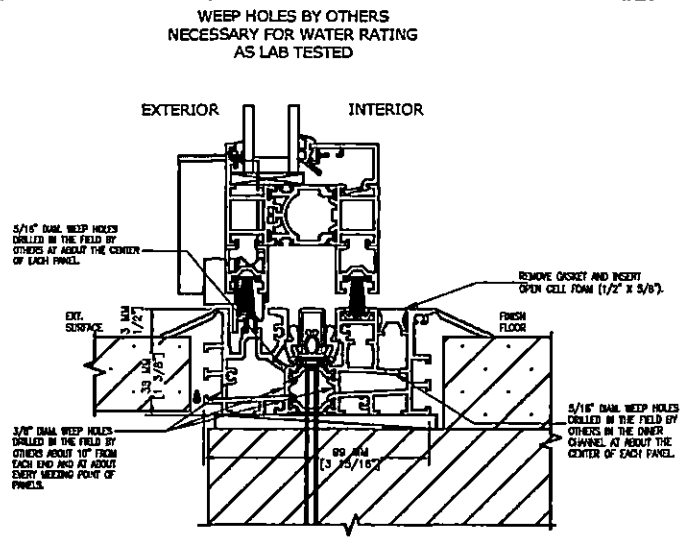
DATE	APPROVAL	BY:	DATE

DATE	APPROVAL	BY:	DATE

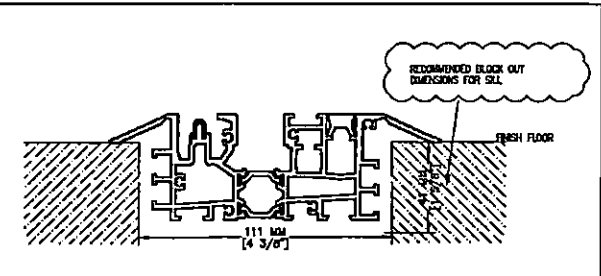
PROJECT INFORMATION
 LaDelle Residence - Mebane, NC
 4674 Dickey Mill Road, Mebane, North
 Carolina, 27302 United States

DWG. #	
DRAWN BY	NDC
SCALE	N.T.S.
QUOTE	557225
ORDER	0
SHEET	

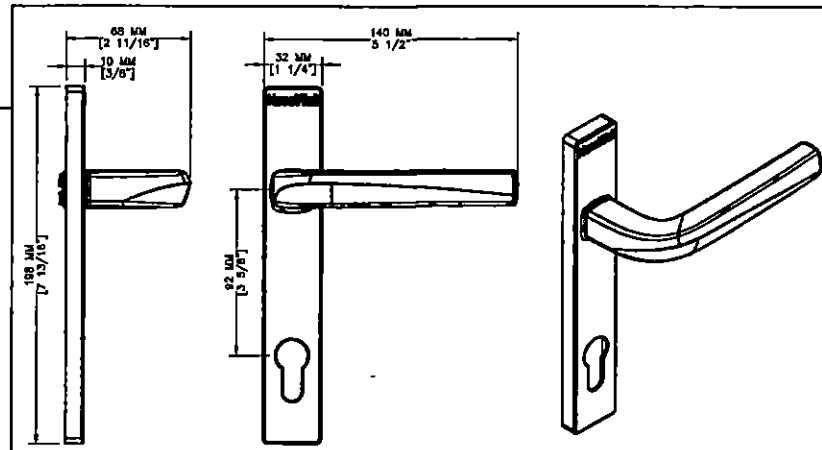
DETAILS ON PAGE 2 ARE NOT TO SCALE (SEE OWNER'S MANUAL FOR MORE DETAILS)



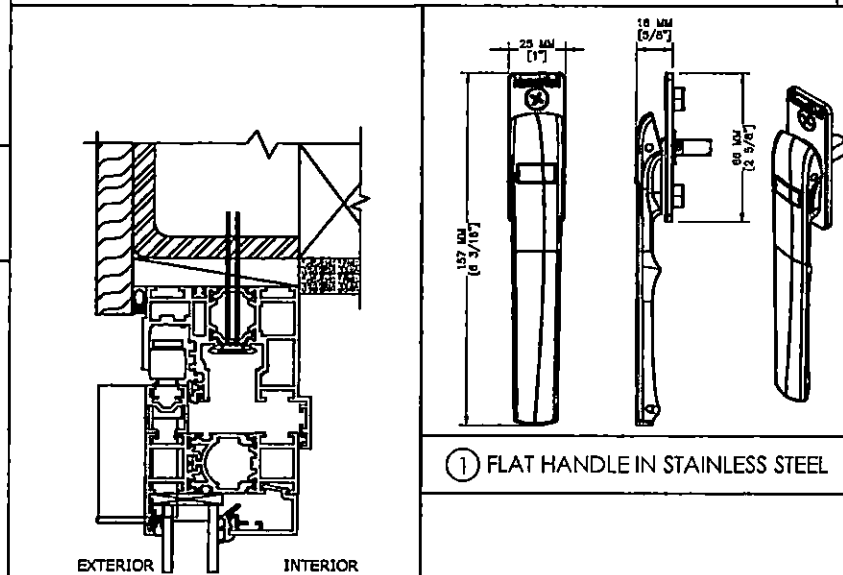
SG SUGGESTED INSTALLATION DETAIL
NW ALUMINUM 640
LOW PROFILE SADDLE SILL OUTWARD OPENING



IN CUT OUT DIMENSIONS FOR LOW PROFILE SADDLE SILL



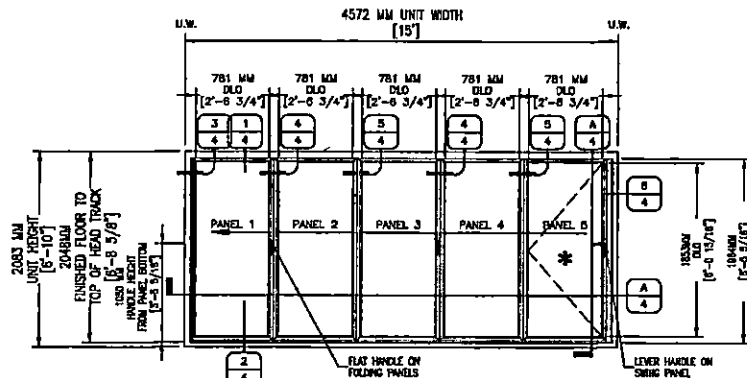
2 LEVER HANDLE IN STAINLESS STEEL



1 FLAT HANDLE IN STAINLESS STEEL

SG SUGGESTED INSTALLATION DETAIL
NW ALUMINUM 640
HEAD TRACK OUTWARD OPENING

PROJECT INFORMATION		DATE	DRAWINGS ISSUED FOR	POSITION
		DATE	DATE	POSITION
Labelle Residence - Mableton, NC 4874 Dickey Mill Road, Mableton North Condon, 27002 United States		BY	NANAWALL SUBMITTAL	NANAWALL POSITION NUMBER: 1
APPROVED		PRINTED/RANGE	CUSTOMER POSITION NUMBER: 1	
DATE		DATE		
DRAWN BY: NDC		NanaWall 10000 W. 10th St. Suite 100 Denver, CO 80202 Tel: 303.751.1111 Fax: 303.751.1112 www.nanawall.com		
SCALE: N.T.S.	QUOTES: 537223	ORDER: 0	SUBMIT	
2 OF 4				



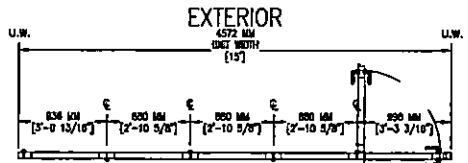
1 ELEVATION - POSITION 1

QUANTITY [1]
(TYPICAL ELEVATIONS SHOWN FROM INTERIOR)

WIND WALL THE ALUMINUM BAG FOLDING SYSTEM (ALL CONNECTIONS OUTWARD & LEFT)
SILL TYPE: THERMALLY BROKEN LOW PROFILE SADDLE (FOR RESISTANCE AGAINST WIND DRIVEN RAIN, WEEP HOLES AND DOWN CONNECTIONS BY OTHERS NECESSARY.)
MOUNT OPTION FLOOR.

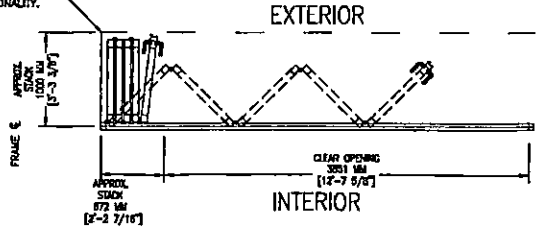
* FIRST PANEL OPEN

NOTE:
FOR SUGGESTED ROUGH OPENING DIMENSION
PLEASE SEE FRAME SECTION DETAILS ON FOLLOWING
DRAWING SET



PANELS CLOSED

DASHED LINE INDICATES LIMITS OF FINISH FLOORING THAT MUST BE CLEAR AND LEVEL FOR PROPER OPERABLE FUNCTIONALITY.



PANELS OPEN

A PLAN SECTION (POSITION 1)
4 1/2"=1'

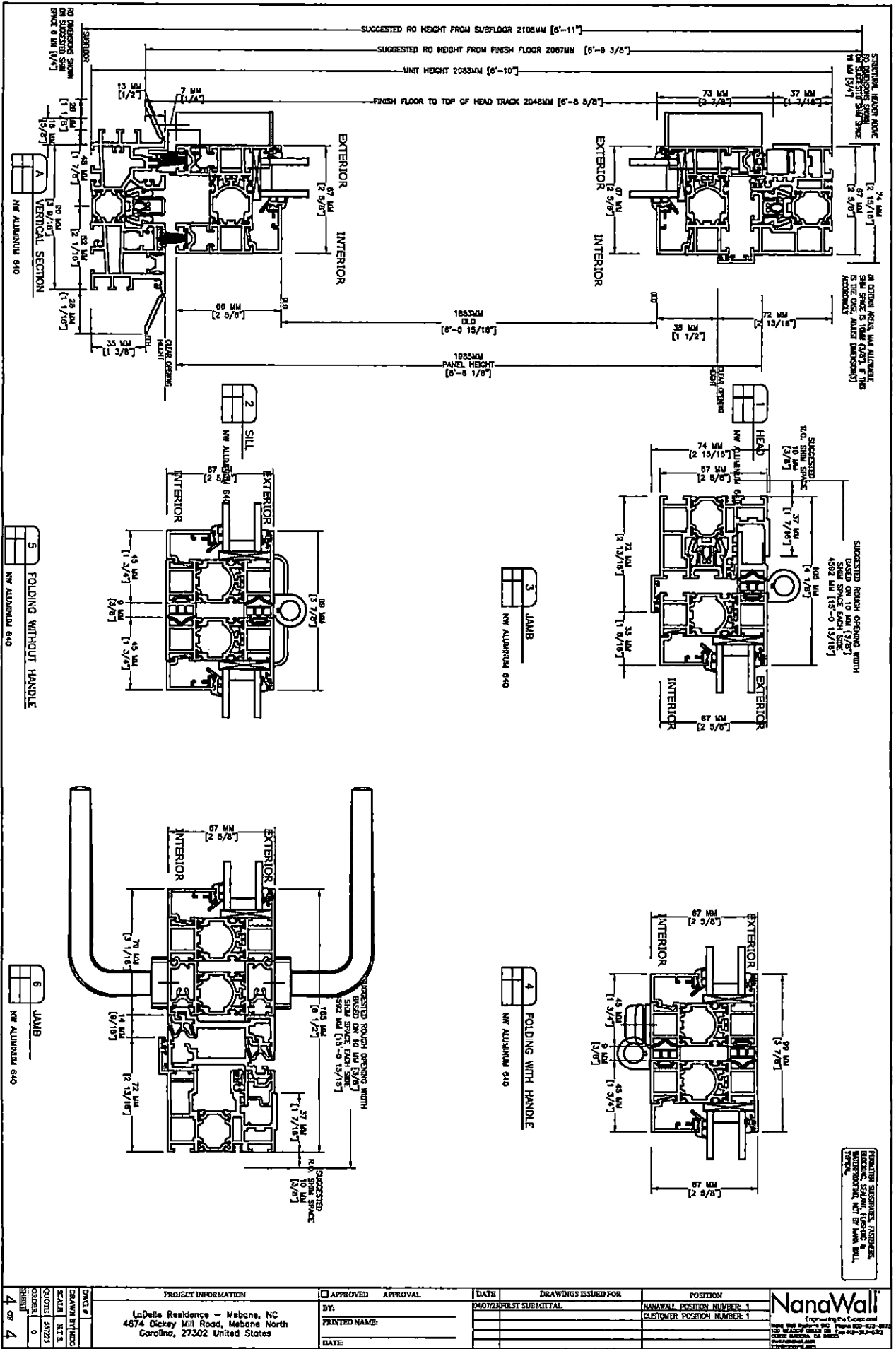
POSITION	
NUMERICAL POSITION NUMBER	1
CUSTOMER POSITION NUMBER	1

DRAWINGS ISSUED FOR	
DATE	
DATE/REVISION	

APPROVED	
BY:	
PRINTED NAME	
DATE	

PROJECT INFORMATION
LaDale Residence - Mahone, NC
4874 Dickey Hill Road, Mahone, North
Carolina, 27302 United States

DWG. #	
DRAWN BY	MDC
SCALE	N.T.S.
QUOTE	35725
ORDER	0
SHEET	



STRUCTURAL MEMBER ABOVE
 DO NOT DIMENSION FROM
 FINISH FLOOR TO TOP OF
 HEAD TRACK 2048MM [6'-8 5/8"]
 18 MM [5/8"]

SUGGESTED ROUGH OPENING WIDTH
 4922 MM [16'-0 13/16"]
 SILL SPACE EACH SIDE
 105 MM [4 1/8"]

FINISH SURFACES, FASTENERS,
 FINISHING, SEALANT, LUBRICANT &
 OPERATIONAL NOT TO SCALE.
 CHECK.

PROJECT INFORMATION		APPROVED	APPROVAL	DATE	DRAWINGS ISSUED FOR	POSITION
LaDella Residence - Mebane, NC 4674 Dickey Mill Road, Mebane North Caroline, 27302 United States		BY:		04/07/2018	FIRST SUBMITTAL	MANUAL POSITION NUMBER: 1 CUSTOMER POSITION NUMBER: 1
DWG #		PRINTED NAME:				
SCALE		DATE:				
CROSS						
SHEET						
4 OF 4						

NanaWall
 Engineering the Custom-look
 Sliding Glass Door and Window
 Systems for Residential and
 Commercial Applications
 100 N. Main Street, Suite 200
 Costa Mesa, CA 92626
 Tel: 714.440.9333
 Fax: 714.440.9334
 www.nanawall.com