

Alamance Consulting Engineers

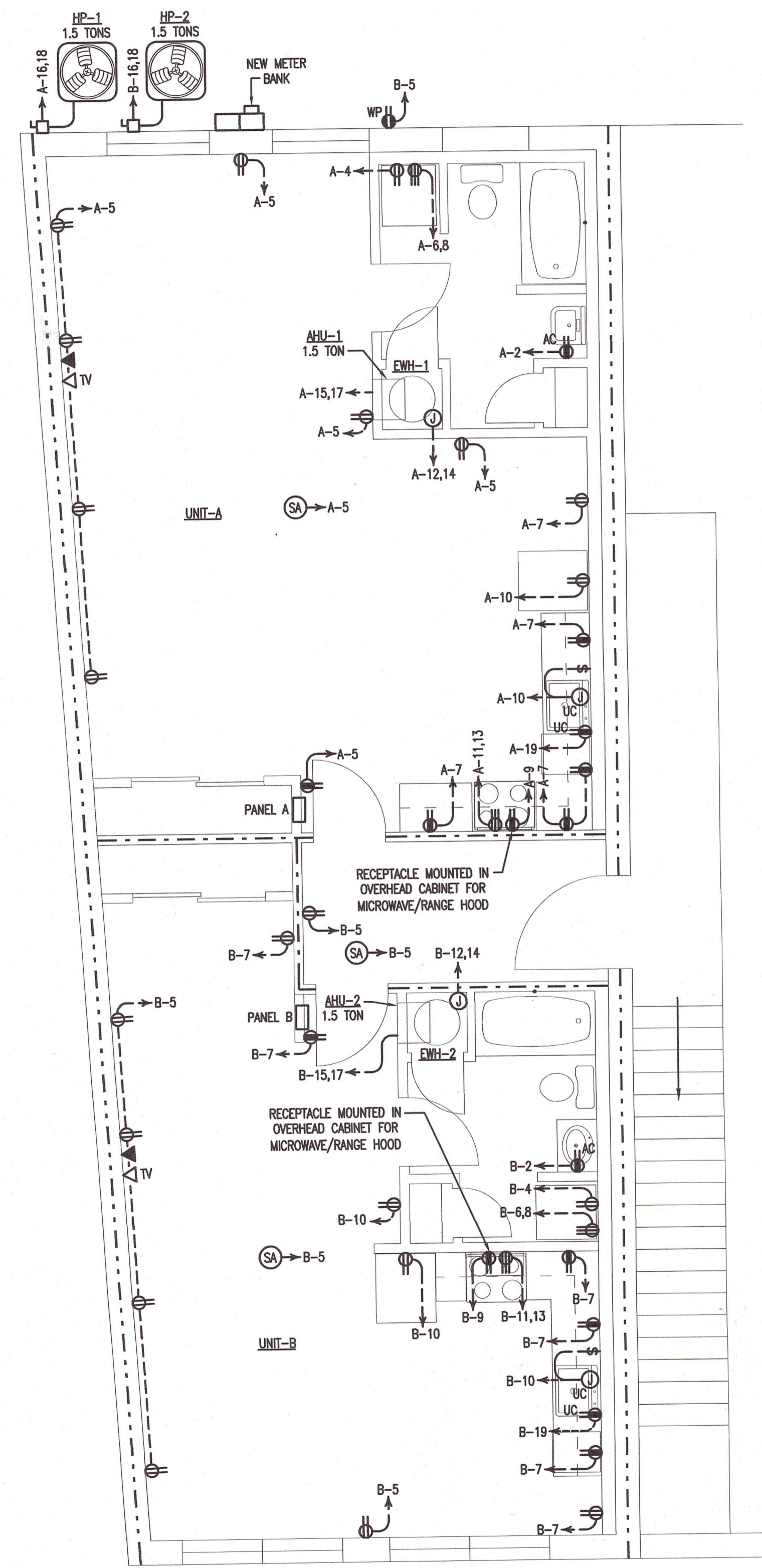
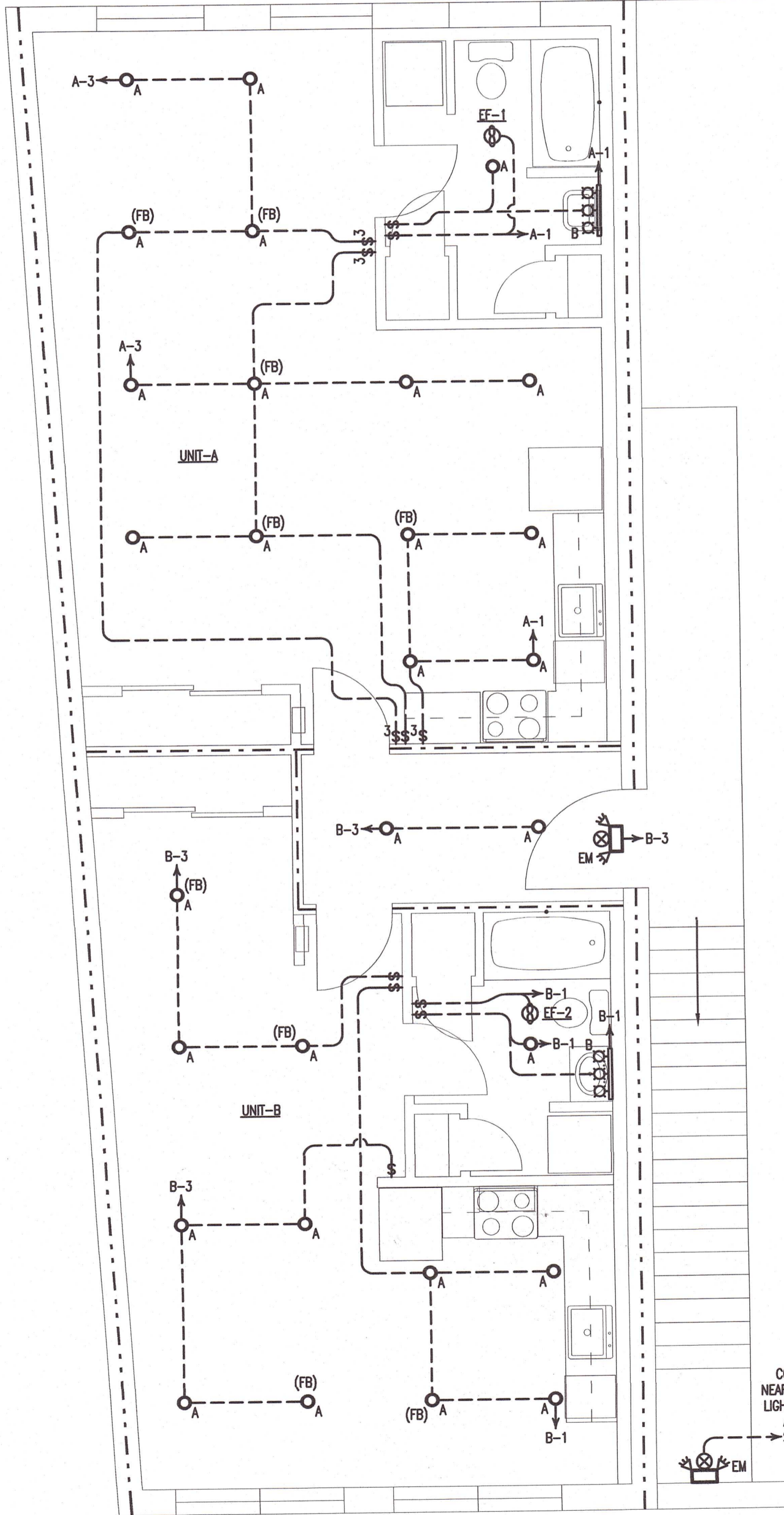
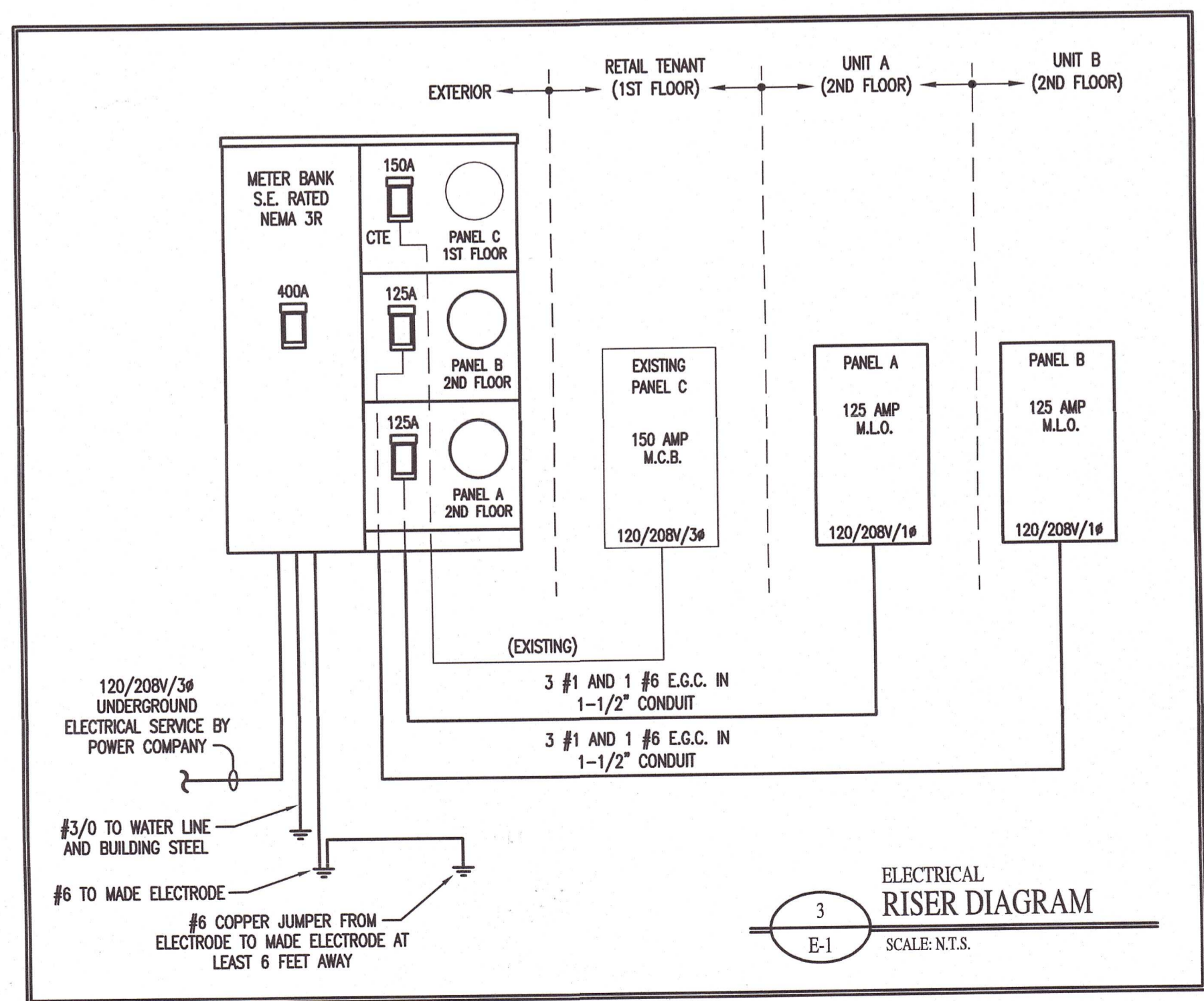
961-F Burlington Ave.
Gibsonville, N.C. 27249
Phone: (336) 449-4558
www.ace-nc.net
N.C. Firm License Number C-2071

| LIGHTING LEGEND | | |
|-----------------|--------|---|
| MARK | SYMBOL | DESCRIPTION |
| A | ○ | SURFACE MOUNTED LED PUCK LIGHT, 13W |
| B | □ □ □ | DECORATIVE WALL MOUNTED LED VANITY LIGHT, 30W |
| EF | ⊕ | BATHROOM EXHAUST FAN, SEE EXHAUST FAN SCHEDULE FOR SPECIFICATIONS |
| EM | ⊕ | LED EMERGENCY/EXIT LIGHT WITH BATTERY BACK-UP |
| --- | (FB) | ELECTRICAL CONTRACTOR TO USE UL LISTED JUNCTION BOX "FOR FAN SUPPORT". SEE NOTE 27. |

| WALL LEGEND | |
|-------------|------------------------|
| SYMBOL | DESCRIPTION |
| ===== | 1-HOUR RATED FIRE WALL |
| ===== | 2-HOUR RATED FIRE WALL |

| ELECTRICAL LEGEND | | |
|-------------------|--|-----------------|
| SYMBOL | DESCRIPTION | MOUNTING HEIGHT |
| ⊖ | DUPLEX RECEPTACLE (120V) * | 18" A.F.F. |
| ⊖ | DUPLEX RECEPTACLE (120V) * GROUND FAULT INTERRUPTER | 18" A.F.F. |
| ⊖ | RECEPTACLE (220V) | 18" A.F.F. |
| ⊖ WP | DUPLEX RECEPTACLE (120V) * GROUND FAULT INTERRUPTER, WEATHER PROOF WITH IN-USE COVER | 18" A.F.F. |
| ⊖ SA | 120 V. SMOKE DETECTOR, FIREX, MODEL #FADC (INSTALLED BY ELECTRICAL CONTRACTOR) | CEILING MOUNT |
| ⊖ | TELEPHONE JACK | 18" A.F.F. |
| ⊖ TV | CABLE CONNECTION JACK | 18" A.F.F. |
| ⊖ | JUNCTION BOX | --- |
| ⊖ | SINGLE POLE WALL SWITCH | 48" A.F.F. |
| ⊖ 3 | THREE WAY WALL SWITCH | 48" A.F.F. |
| UC | DENOTES UNDERCOUNTER MOUNTING | 24" A.F.F. |
| AC | DENOTES ABOVE COUNTER MOUNTING | 48" A.F.F. |
| CTE | DENOTES CONNECT TO EXISTING | --- |

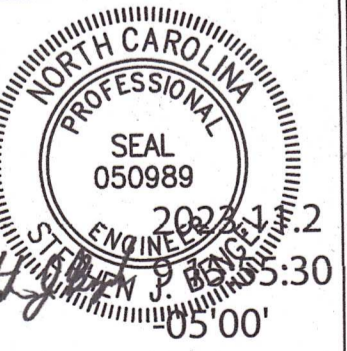
* RECEPTACLES TO BE TAMPER PROOF



BENFIELD APARTMENTS

111 E. Main St.
Gibsonville, NC 27249

DRAWING NAME
ELECTRICAL PLANS



DRAWN: HLD
CHECKED: JNK
DATE: 11/29/23
SCALE: AS NOTED
JOB NO.: 23052
SHEET

E-1